

SOLENOID VALVE FLUX

Solenoid valve to flush the supply line to the water tank or backflow preventer according to DIN 1988:600.

Item number: 3050700

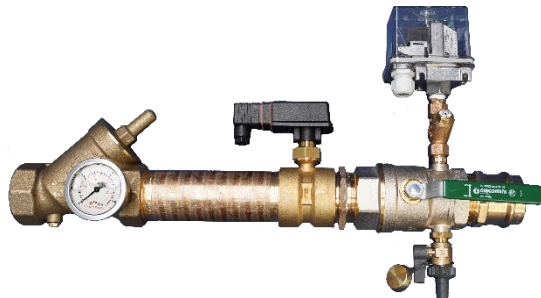
**CONNECTION ASSEMBLY FLA TO SPRINKLER SYSTEM**

Prefabricated assembly for water supply via an existing sprinkler system.

Fully assembled, consisting of:

- Flow monitor DFW 2"
- Ball valve for draining
- Ball valve 2" to shut off
- Backflow preventer 2"
- VdS safety pressure switch DS3
- Transition for stainless steel pipe

Item no.: 3055702

**CMC TECHNOLOGIES**

PTY LIMITED ACN: 085 991 224, ABN: 47 085 991 224

Engineering &
Industrial
Instrumentation

Phone: +61 2 9669 4000
Fax: +61 2 9669 4111
Email: sales@cmctechnologies.com.au
Web Site: <http://www.cmctechnologies.net.au>

Unit 19, 77 Bourke Road,
Alexandria, NSW, 2015
AUSTRALIA