

IVE

FLAMELESS EXPLOSION VENT
BUCKET ELEVATOR & PROCESS VESSEL PROTECTION



PRODUCT INFORMATION SHEET

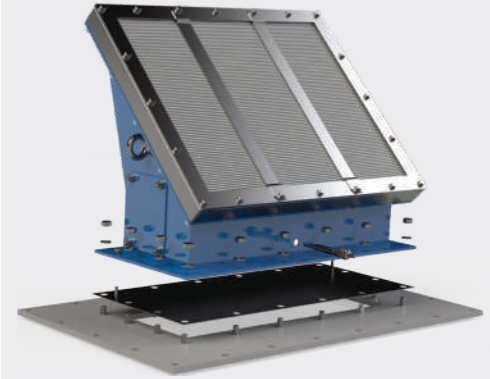
Description

The IVE Flameless Explosion Vent provides an explosion protection solution for process vessels, especially bucket elevators, which are located inside a building or areas where standard explosion venting cannot be safely employed. For these applications, flameless explosion vents may be the best protection solution. When an explosion occurs, the venting device opens and vents the explosion pressure and flame through a flame arrester, thereby cooling the hot gases and quenching the flame. The IVE utilizes a stainless steel explosion relief vent and flame arresting mesh enclosed in a durable carbon steel coated frame. The integrated vent burst detection sensor allows plant personnel to respond accordingly in the event of an explosion within the protected application.

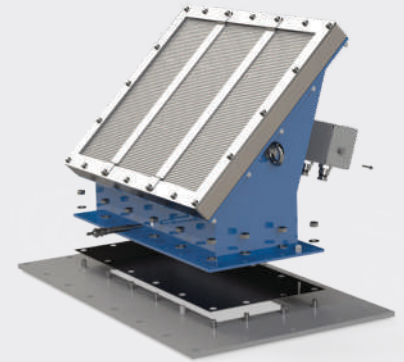
Features

- Designed to provide easy installation on bucket elevators
- Provides explosion pressure relief without flame ejection
- Superior efficiency due to large mesh area
- Certified to EN16009 using state-of-the-art measurement technologies
- Integrated vent burst sensor
- Inspection port to allow easy inspection
- Designed for field reconditioning
- Optional weather cover

IVE Flameless Explosion Vent



IVE Flameless Explosion Vent



IVE Flameless Explosion Vent showing burst sensor connection box



Application

Flameless explosion venting device designed specifically for use on bucket elevators, which are located inside a building or areas where standard explosion venting cannot be safely employed.

Contact Information

CMC Technologies Pty Limited

Unit 19, 77 Bourke Road,
 Alexandria, NSW 2015
 AUSTRALIA

P: +61 2 9669 4000

F: +61 2 9669 4111

E: sales@cmctechnologies.com.au

Specifications

Nominal Vent Size mm (in)	350x650 (13.8x25.6)	300x500 (11.8x19.7)	270x458 (10.6x18)	220x740 (8.7x29)	170x470 (6.7x18.5)
HxWxL mm (in)	717x598x730 (28.2x23.5x28.7)	621x525x580 (24.4x20.7x22.8)	570x481x538 (22.4x18.9x21.2)	495x408x820 (19.5x16x32.3)	422x335x550 (16.6x13.2x21.7)
P _{stat}	0.1barg (1.45psig) +/-10%; on request: 0.06barg (0.87) +/-10%				
P _{red, max}	0.9barg (13.1psig)				
K _{st}	≤200 bar m/s				
P _{max}	≤10 bar				
MIE	>3mJ				
Weight	42kg/93lb	38kg/84lb	37kg/82lb	39kg/86lb	24kg/53lb
Material:					
Vent Panel	Stainless Steel				
Flame Arrester	Stainless Steel				
Gasket	EPDM or Silicone				
Frame	Coated Carbon Steel				