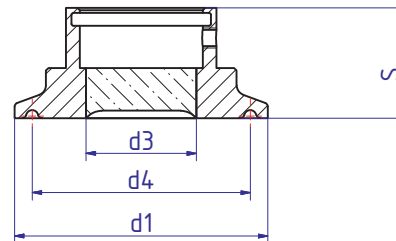
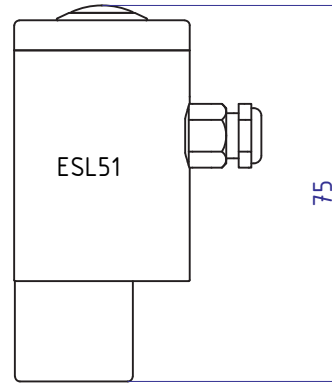
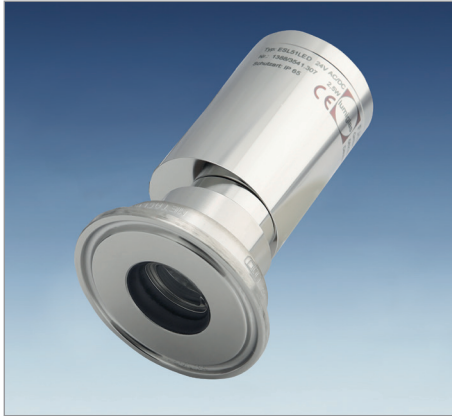


METACLAMP® METACLAMP & ESL51 Luminaire USL01/ ES51



Applications

- Compact sanitary combination of miniature stainless steel Lumiglas ESL51 light with the proven Metaclamp sanitary mounting system.

Sanitary Metaclamp Materials

- Duplex Stainless Steel (1.4462)
- Hastelloy C-22 (2.4602)
- Hastelloy C-4 (2.4610)

Material certificates

- Certificate of Conformity to
- EN 10204-3.1 or 3.2 for extra costs

Operating conditions for sight glass

- Pressure: -1 to 16 bar
- Temperature: see table

Ring

materials	Temperature (TS)
1.4462	-30°C bis +280°C
2.4602	-60°C bis +300°C
2.4610	-60°C bis +300°C

Technical data Manufactured and tested to:

- Directive for pressure equipment 97/23/EG 02/98, Module H (DIN/EN/ISO 9001)
- AD2000 Standards W0/TRD 100
- Sight glass fused to metal conforming to DIN 7079
- Materials to VdTÜV specifications and the DIN/EN designated standards
- Glass: Borosilicate to DIN 7080 / DIN 7079

Advantages

- Miniature space saving design
- Suitable for food processing (A3-Standard)
- Dust and water jet resistant (IP65) even during external washdown
- Fast & simple installation with no risk of breakage
- Very high resistance to impact
- Sight glass resistant to catastro

Light Mini-Lumiglas Stainless Steel

- operating voltage: 24 V AC/DC – 2.5 W
- Colour temperature: 5000 K
- Luminous flux: 180 lm
- Reflected beam angle: 18°
- Housing: stainless steel DIN 1.4301 or similar
- Power cable: 3 m
- Maximum admissible ambient temperature at the cable gland: 50°C
- Protection class: Dust-tight and water jet-proof, IP 65 acc. to EN 60 529 / DIN VDE 0470 part

Nominal size			d1	d3	d4	S	Max. operating pressure [bar]
DIN	ISO	Zoll					
-	8/10	1/2", 3/4"	25	10	18,0	28	16
10/15/20	-	-	34	14	27,5	28	16
25/32/40	15/20/25	1", 1 1/2"	50,5	22	43,5	22	16
50*	32/40*	2" *	64	23	56,5	22	16

* sight glass fitting type USL33 recommended