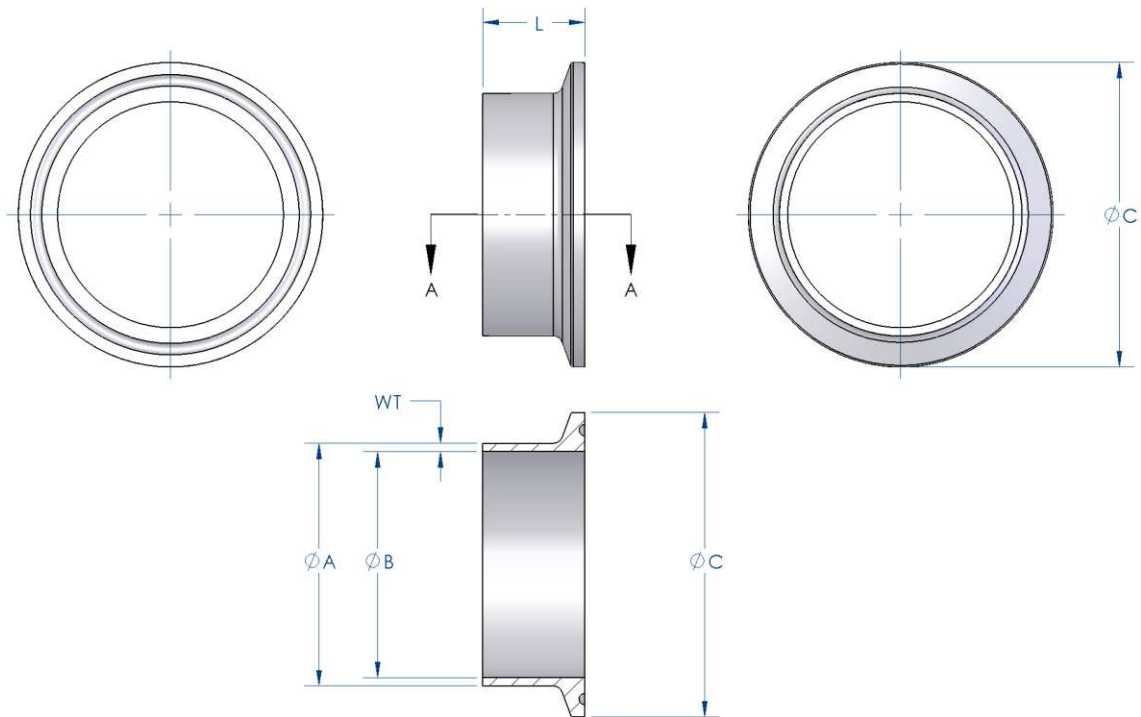


Material	316L / 1.4404
Surface Finish	0.8 Ra(µm) / 32 Ra(µin)
Manufactured	3.1b Certified- Solid Bar

PHARMACEUTICAL FERRULES 14 MPW TANK

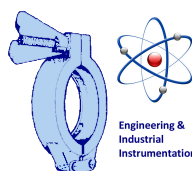


FERRULES - 14 MPW TANK						
Nominal Size Inch	Dimensions (mm)					Ordering Code
	OD ØA	ID ØB	Flange ØC	Wall WT	Length L	
1"	29.46	22.10	50.5	3.68	41.3	FR.MPW.0100
1 1/2"	42.57	34.80	50.5	3.89	41.3	FR.MPW.0150
2"	55.68	47.50	64.0	4.09	44.5	FR.MPW.0200
2 1/2"	68.78	60.20	77.5	4.29	44.5	FR.MPW.0250
3"	81.89	72.90	91.0	4.50	46.0	FR.MPW.0300
4"	108.10	97.38	119.0	5.36	54.0	FR.MPW.0400
6"	157.28	146.25	167.0	5.52	63.5	FR.MPW.0600
8"	208.08	197.05	217.4	5.52	63.5	FR.MPW.0800

The above table shows the full range of 14 MPW tank ferrules as given in the exacting standard. Advanced Couplings can offer non-standard 14 MPW tank ferrule adaptations in varying lengths and internal surface finishes to suit individual customer requirements. Please contact our sales department if the ferrule you require cannot be found in our brochure.

Advanced Couplings Ltd

Thwaites Bridge | Keighley | West Yorkshire | BD21 4LJ | UK
 Tel : 0044 (0) 1535 669 216 | Fax: 0044 (0) 1535 610 243
 e-mail : sales@advanced-couplings.co.uk
 web : www.advanced-couplings.co.uk



CMC TECHNOLOGIES

PTY LIMITED ACN: 085 991 224, ABN: 47 085 991 224

Phone: +61 2 9669 4000
 Fax: +61 2 9669 4111
 Email: sales@cmctechnologies.com.au
 Web Site: <http://www.cmctechnologies.net.au>

Unit 19, 77 Bourke Road,
 Alexandria, NSW, 2015
 AUSTRALIA