



Sight Flow Indicators

Type C - Customised Designed

Data Sheet VC3.03

- High quality robust design
- Threaded or flanged connections
- Pressures up to 250 bar
- Temperatures up to 500°C
- CE Marked where required and fully compliant with the Pressure Equipment Directive.



Applications:

Type C sight flow indicators are custom designed to meet the specifications that the standard range of sight flow indicators cannot.

Advantages:

PED compliant where required

Ease of Maintenance: Spare glass and gaskets can be individually removed and replaced

Durable construction

Construction:

- Screwed connections to NPT, BSPP or BSPT
- Socket weld connections also available
- Standard flanges include ANSI 150, ANSI 300 and PN16 special flange ratings are available
- Body and covers to customer requirements
- Gaskets and fasteners to customer requirements
- Sodalime glass to BS 3463 or DIN 8902
- Borosilicate glass to BS 3463 or DIN 7080
- Borosilicate glass recommended for steam & condensate

Options:

- METAGLAS[®] Safety Sightglass Windows for ultimate safety & long life
- Internal Flap or Paddle Wheel for flow indication
- NACE MR0175: Sightglasses can be produced to conform with NACE MR0175
- Lining: Body can be lined with HALAR ECTFE or PFA for particularly corrosive applications
- High pressure up to 250 bar
- Mica discs can be used to protect glass from alkaline and steam

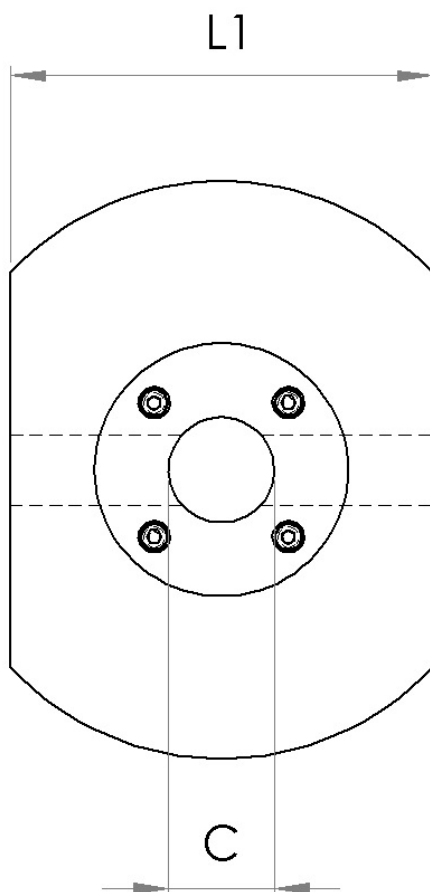
Quality:

- Manufactured to the highest standard
- Quality system is independently audited by SAI and certified to ISO9001
- Indicators are fully PED compliant and CE marked where required
- Full material traceability is maintained, material test certificates and pressure test certificates supplied on request

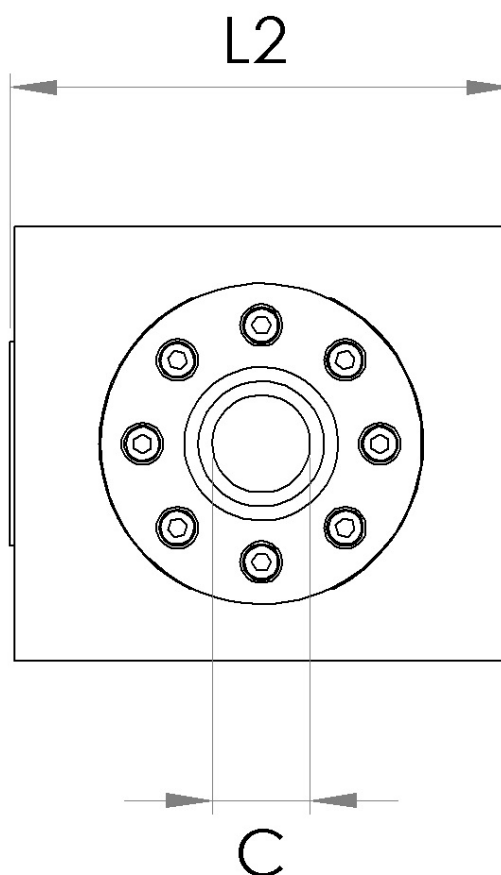




Dimensions Threaded Design



Dimensions Flanged Design



Nominal Bore mm	Nominal Bore inch	Length L1 mm	Length L2 mm	Clearview C mm
15	½	85	130	15
20	¾	85	130	20
25	1	95	140	25
40	1 ½	120	180	40
50	2	150	220	50

