

Lumistar Luminaire ESL 26, Stainless Steel

CE

3755.153 b

- **For mounting on sight glass fittings:**
This sight glass luminaire is made of stainless steel and designed for universal applications. It is ideal for use in combined sight and light ports (single-flange version) or with two separate ports (2-flange version).
- **Compact design, powerful light output:**
Glare-free illumination; fits circular sight glass fittings to DIN 28120/DIN 28121 or similar, screw-type sight glass fittings in compliance with DIN 11851, and sight glass fittings in visual flow indicators. Nominal sizes DN 50 and upward, depending on fitting.
- **Large light exit and convenient lamp replacement thanks to optimised screwed lens design**
- **Application:**
For illuminating the interior of pressure vessels, tanks, silos, agitators and other, usually closed, vessels and reactors as well as visual flow indicators **in non-explosive environments**. Recommended for use in food processing industries.
- **Protection class:** dust- and splash-proof, IP 65 acc. to EN 60 529 / DIN VDE 0470, Part 1
- **Operating conditions:**
Independent of the internal pressure / vacuum in the vessel. On no account should a sight glass luminaire be used on its own to close a vessel port or as a replacement for the cover flange or instead of the complete sight glass flange assembly.
- **Maximum admissible ambient temperature at the cable entry gland:** 80 °C
In ambient temperatures of > 40°C, heat-resistant cable should be used, such as Sinotherm 110 H05GG-F 3G 1.5 mm².
- **Very easy to install using special mountings, ensuring convenient use:**
The luminaire is attached to the cover flange of the circular sight glass fitting or the visual flow indicator by means of a hinged bracket, or fastened to the grooved nut on screw-type sight glass fittings.

The Lumistar luminaire ESL 26 fits the following sizes:

- Circular sight glass fittings acc. to DIN 28120, DIN 28021 and visual flow indicators; mounting on cover flange: from DN 50
- Screw-type sight glass fittings in compliance with DIN 11851:
 - mounting on or below the grooved nut:
 - DN 65, 80, 100: by flange adapter
 - DN 80, 100, 125: by hinged bracket
 - DN 80 and 100: by flange adapter or hinged bracket

- **Voltage type:** AC/DC, depending on type of luminaire

Operating voltage:

without integrated transformer:

12 V	Halogen lamp	20 W or 50 W, AC/DC
24 V	Halogen lamp	20 W, 50 W or 100 W, AC/DC
230 V	Halogen lamp	50 W or 75 W

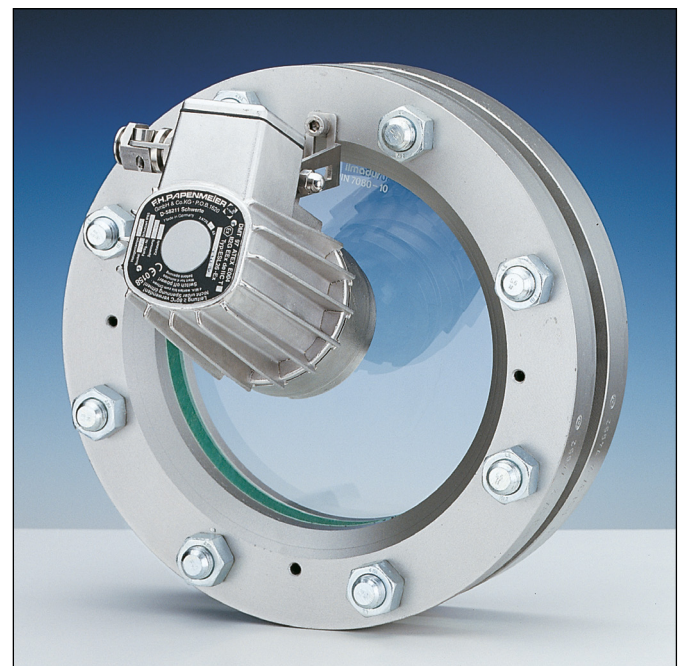
with integrated transformer:

PTC-protected (5 W), otherwise thermal fuse (> 5 W)

120 V	Halogen lamp	12 V/20 W AC
230 V	Halogen lamp	12 V/20 W AC



Lumistar luminaire ESL 26, stainless steel with integrated terminal box and hinged bracket fastening



Application as a combined sight and light glass mounted on a sight glass fitting acc. to DIN 28120 using a hinged bracket

Transformers:

Transformers for 12 V or 24 V secondary voltage can be supplied on request.



CMC TECHNOLOGIES

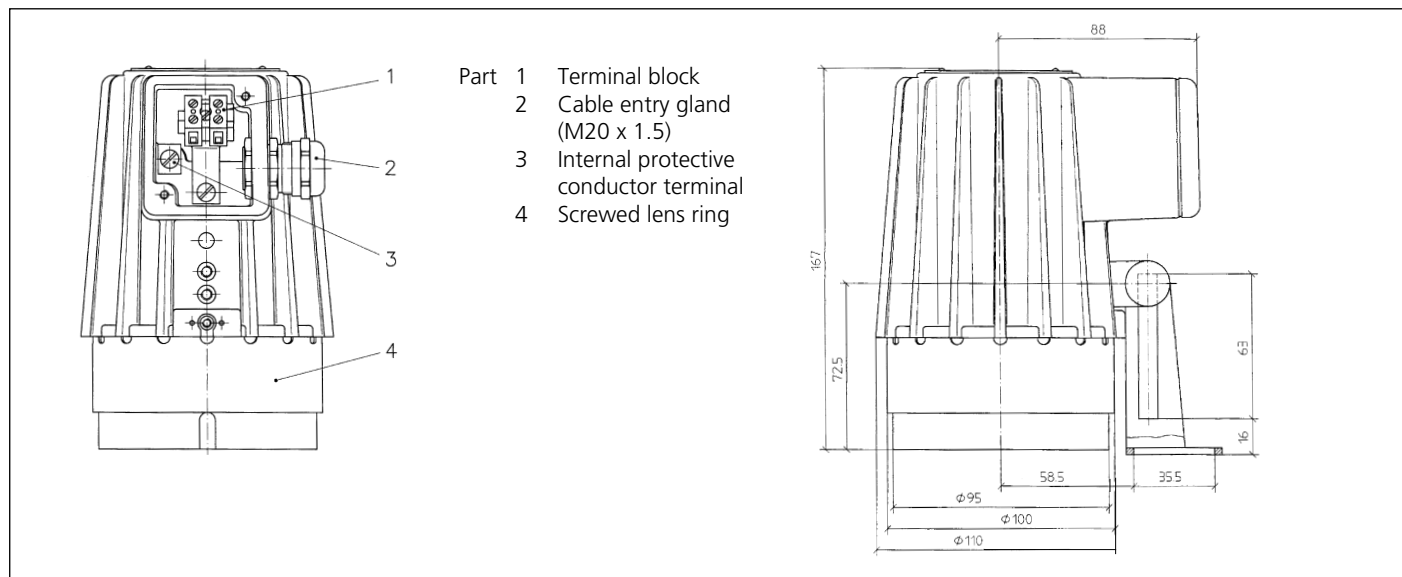
PTY LIMITED ACN: 085 991 224, ABN: 47 085 991 224

Engineering & Industrial Instrumentation
 Phone: +61 2 9669 4000
 Fax: +61 2 9669 4111
 Email: sales@cmctechnologies.com.au
 Web Site: <http://www.cmctechnologies.net.au>

Unit 19, 77 Bourke Road,
 Alexandria, NSW, 2015
 AUSTRALIA

PAPENMEIER

• Dimensions and electrical data for Lumistar luminaire ESL 26:



• Components, design and materials:

- luminaire body: stainless steel 1.4404 (316LF), polished
- mounting parts: stainless steel 1.4301 (see accessories)
- cable entry gland M20 x 1.5

• Weight:

- without integrated transformer: 1.7 kg
- with integrated transformer 2.3 kg

• Connecting data:

Lumistar luminaire ESL 26					replacement halogen lamp		
item	ESL 25	part no.	nominal voltage V	integrated transformer	voltage/wattage	socket	part no.
1	(12 V) 20 W	3540.851.00	12 ≈	without	12 V/20 W	GY6.35	3232.240.00
2	(24 V) 20 W	3540.853.00	24 ~	without	24 V/20 W	G4	3232.206.00
3	(120 V/12 V) 20 W	3540.858.00	120 ~	with	12 V/20 W	GY6.35	3232.240.00
4	(230 V/12 V) 20 W	3540.860.00	230 ≈	with	12 V/20 W	GY6.35	3232.240.00
5	(12 V) 50 W	3540.876.00	12 ~	without	12 V/50 W	GY6.35	3232.238.00
6	(24 V) 50 W	3540.881.00	24 ~	without	24 V/50 W	GY6.35	3232.242.00
7	(230 V) 50 W	3540.885.00	230 ≈	without	230 V/50 W HISPOT ESD50	GZ10	3232.261.00
8	(230 V) 50 W	3540.886.00	230 ≈	without	230 V/50 W PAR 20	E27	3232.241.00
9	(230 V) 75 W	3540.888.00	230 ≈	without	230 V/75 W HISPOT ESD50	GZ10	3232.263.00
10	(24 V) 100 W	3540.895.00	24 ≈	without	120 V/20 W	GY6.35	3232.244.00

• Accessories:

item	component	part no.
1	hinged bracket for mounting luminaire, stainless steel	0354.016.00
2	flange adapter for DN 65-100, stainless steel	1356.015.00
3	timer (external) for time-dependent illumination, Lumiglas timer push-button	auf Anfrage
4	claw spanner for screw-in lens, for opening the luminaire	6805.001.00

- **Order data:** e. g. Lumistar luminaire ESL 26, 230 V/50 W, part no. 3540.885.00, with hinged bracket, part no. 0354.016.00 and claw spanner, part no. 6805.001.00

All dimensions in mm unless stated otherwise. Subject to change without prior notice. 10.16