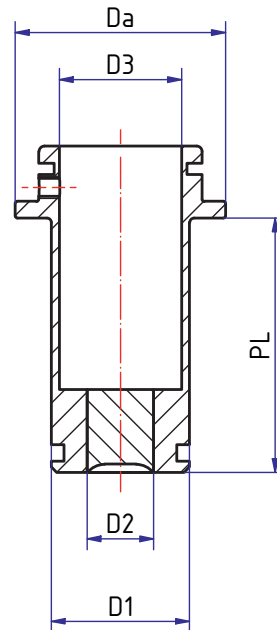
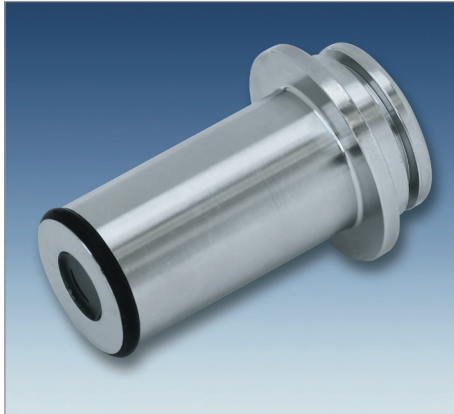


METAGLAS® Sight glass for Ingold socket and luminaire Mikrolux



Applications

Ingold socket

Advantages

- Extremely compact design

Material certificates

- Certificate of conformity EN 10204-3.1

Materials

- 1.4462, 2.4602
- Glass: borosilicate Glass
DIN 7080 / DIN 7079

Ring

materials Temperature (TS)

1.4462	-30°C bis +280°C
2.4602	-60°C bis +300°C
2.4610	-60°C bis +300°C

Surfaces

- Product touching surfaces $R_a < 0,4 \mu\text{m}$
- Electro polished on demand

Accessories

- Stainless steel luminaire Type 1803 „Mikrolux“ (for DN25)
- voltage: 6-24 VDC
- LED-technology
- power: 2W-140 lm for continuous operation
- power: 4W-340 lm for currently operation
- 3- or 4-pole plug connection
- with or without built-in push button
- Max. ambient temperature 40°C

Stainless steel luminaire Type MVLR (for DN40)

- voltage: 22-26V AD/CD
- power: 2W
- LED-technology
- approved for continuous operation
- Max. ambient temperature 40°C

Size	D1	PL	D2	D3	Da
DN25 PL30	25	30	12	22	38
DN25 PL46	25	46	12	22	38
DN40 PL30	40	30	24	34	50
DN40 PL48	40	48	24	34	50