



/ Installation guideline REDEX Slide

/ Function diagram explosion isolation slide valve REDEX Slide



- / Pressure resistant design
- / Flame and pressure barrier
- / The control unit including the pressure and/or infrared detectors are designed/equipped and supplied by our partners
- / In case of an explosion the slide valve closes by means of the pressure generated by a gas generator
- / The slide blade stopped in case of an explosion by braking elements
- / Position indication by switch open/close (inductive)
- / Flanges according DIN EN 1092-1 PN6
- / Pneumatic connection nipple on the slide valve
- / Electrical connecting box on the slide valve for connection

/ Certified for

Zone inside:

Ex II 1D / Zone 20, 21, 22

Zone outside:

The outside zone is depending on the execution of the mounted parts (e.g. Switch).



/ Description

Function	Installation position
for dust, double acting	any installation position

/ Technical data

		Nominal diameter			
		DN80	DN100	DN125	DN150
Test certificate		FSA 14 ATEX 1647 X			
Quantity of gas generator	piece	1	1	1	1
Explosion pressure at 20°C	P_{red} bar(g)	2.5	2.5	2.5	2.5
Closing time	ms	16	16	16	16
Maximal allowed process temperature	°C	+90	+90	+90	+90
Organic dust [St1 und St2]					
max. K_{St} -Value	bar x m x s ⁻¹	320	320	320	320
Installation distance	min. m	1	1	1	1
	max. m	8	8	8	8

The min. installation distance is only valid, if the operating time of the control unit is ≤ 2.7 ms.

/ Requirements on the installation situation

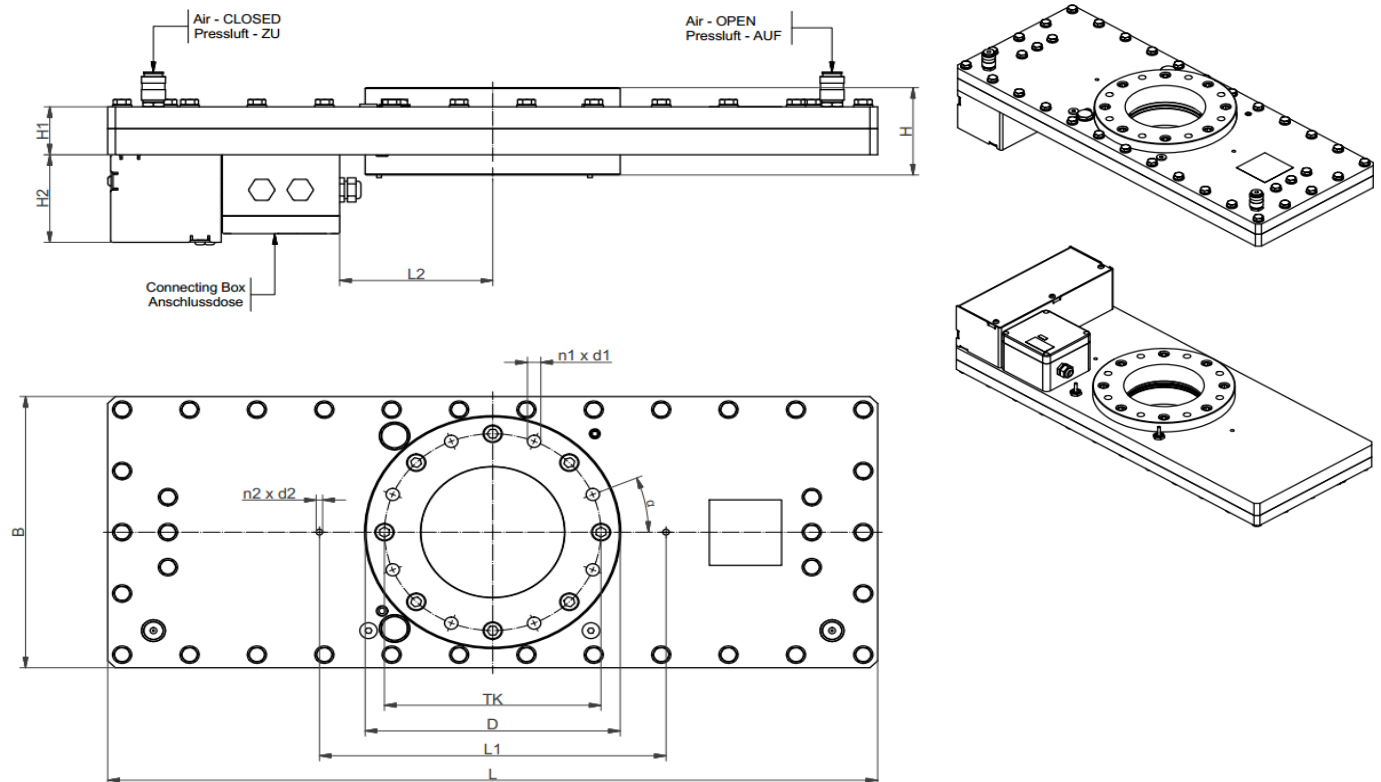
Einbausituation	Requirements and notes
Max. explosion pressure	If the temperature of the air, which flows through the pipe, is higher than +70°C the maximum allowed explosion pressure is reduced.
Installation	The slide valve must not be mounted at the end of a pipe. After the slide valve there must be a pipe following (Length min. 1m, stability PN1).
Overpressure in the pipe not allowed	The slide valve must not be used in pipes which have over pressure.
Liquid substances in the pipe not allowed	The slide valve must not be used in pipes which contain liquid substances. The slide valve is designed only for dust applications.
Cleaning from outside allowed	The slide valve can be cleaned/washed with liquid substances from outside (pressure washer, hosepipe, ...). The protection class of the housing is similar IP65.
Support needed	The slide valve must be supported independent from the piping. Please use for this purpose the provided threads on the slide valve.
Outside installation allowed	The slide valve can be installed outside (without weather protection). Protection class similar IP65.
Area for maintenance	In order to have enough space for maintenance, please provide all around the slide valve enough space. Therefore please consider the dimensional drawing.

/ Installation guideline REDEX Slide

/ Dimensions

Dimensions according DIN 1092-1 PN6		Nominal diameter			
Dimensions in mm		DN80	DN100	DN125	DN150
Length	L	800	800	800	800
Width of the housing	B	310	310	310	310
Height of the installation	H	100	100	100	100
Pitch circle diameter	TK	150	170	200	225
Pitch angle	α	45°	45°	22.5°	22.5°
Quantity of threads	n1	8	8	8	8
Thread size	d1	M16	M16	M16	M16
Thread position	L2	360	360	360	360
Quantity of threads	n2	2	2	2	2
Thread size	d2	M8	M8	M8	M8
Length	L3	159	159	159	159
Height of the cover	H2	100	100	100	100
Weight (net)	approx. kg	64	62	58	54

The installation height is identical to the RICO slide valve RSV-D, which also can be used for dust applications.



RICO Sicherheitstechnik AG reserves the right to make technical changes or modify the contents of this document without prior notice.