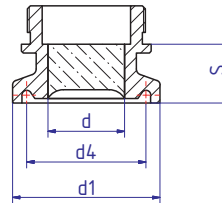
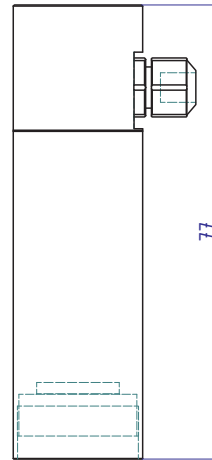


METACLAMP® with Luminaire Mikrolux



Applications

- Compact sanitary combination of miniatur stainless steel Luminaire Mikrolux light with proven Metaclamp sanitary mounting system. Providing up to 20 watts of intense glare free illumination through a METAGLAS® safety glass lens

Material certificates

- Certificate of conformity to EN 10204-3.1 or 3.2 for extra costs

Sanitary Metaclamp Materials

- Duplex Stainless Steel (1.4462)
- Hastelloy C-22 (2.4602)
- Hastelloy C-4 (2.4610)

Operating conditions for sight glass

- Pressure: -1 to 16 bar
- Temperature: see table

Ring

materials	Temperature (TS)
1.4462	-30°C bis +280°C
2.4602	-60°C bis +300°C

Technical data Manufactured and tested to:

- Directive for pressure equipment 2014/68/EU, Module H (DIN/EN/ISO 9001)
- AD2000 Standards W0/TRD 100
- Sight glass fused to metal conforming to DIN 7079
- Materials to VdTÜV specifications and the DIN/EN designated standards
- Glass: Borosilikate to DIN 7080 / DIN 7079

Advantages

- Very compact construction
- Maintenance-friendly plug connection
- Ideal for the illumination of small tanks in non explosion hazard areas
- Aseptic design

Light Type 1803 „Mikrolux“

- Supply voltage: 24V AC or DC
- Housing: stainless steel DIN 1.4301 or similar
- Operating time: more than 50.000 operating hours
- Dust and water-jet proof IP65 & EN 60 529/DIN VDE 0470 part 1
- Brightness: 140lm
- Ambient Temperature: max. 50°C

Nominal size			d1	d	d4	S	Pressure rating [bar]
DIN	ISO	ASME BPE					
-	8/10	1/2" / 3/4"	25	13	20,5	10	16
10/15/20	-	-	34	14	27,5	8	16
25/32/40	15/20/25	1 1/2" / 1"	50,5	14	43,5	10	16