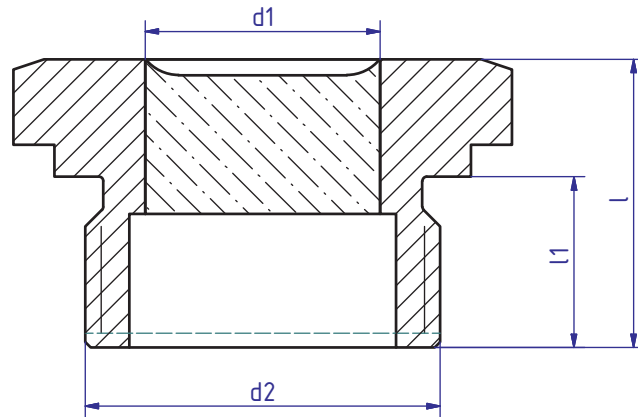


## METAGLAS® Threaded Sight glass – Hexagon Head



### Applications

- Female connection with metric or Whitworth thread

### Advantages

- Very compact
- High pressure resistance
- Simple assembly
- Long working time

### Operating conditions

- Pressure: 50 bar
- Temperature: see table

Glass Quality	max. Temperature (TS)
Borosilikatglas	+280°C
AR-Glas	+150°C

### Technical data Manufactured and tested to:

- Directive for pressure equipment 2014/68/EU, Module H (DIN/EN/ISO 9001)
- AD 2000 Standards W0/TRD 100
- Sight glass fused to metal conforming to DIN 7079
- Materials to VdTÜV specifications and the DIN/EN designated standards

### Material certificates

- Certificate of Conformity to EN 10204-3.1 or 3.2

### Materials

- Ring material: Carbon Steel (S355J2+N), Stainless Steel (1.4462) or Hastelloy C22
- Glass: Borosilicate to DIN7080 / DIN7079

### Dimensions to DIN 3852

- Type F (Sealing with O-Ring)

d2 (Thread)		SW	d1	d3	l	l1 O-Ring	
M-Thread	R-Thread						
M18 x 1,5	G3/8"	24	12,5	24	18	12	15,3 x 2,4
M20 x 1,5	G1/2"	27	13	27	18	12	14,3 x 2,4
M26 x 1,5	G3/4"	32	16	32	23	15	17,3 x 2,4
M27 x 2	G1"	32	16	32	25	14	18,0 x 2,4
M33 x 2	G1 1/4"	41	22	41	25	16	22,0 x 3,0
M42 x 2	G1 1/2"	50	26	50	27	18	30,0 x 3,0
M48 x 2	G2"	55	28	55	33	22	38,0 x 3,0
M60 x 2	G2 1/2"	70	35	70	37	19	44,0 x 3,0
M78 x 2		90	50	88	37	22,5	56,0 x 3,0
		90	50	88	37	22,5	75,0 x 3,0
							70,0 x 3,0